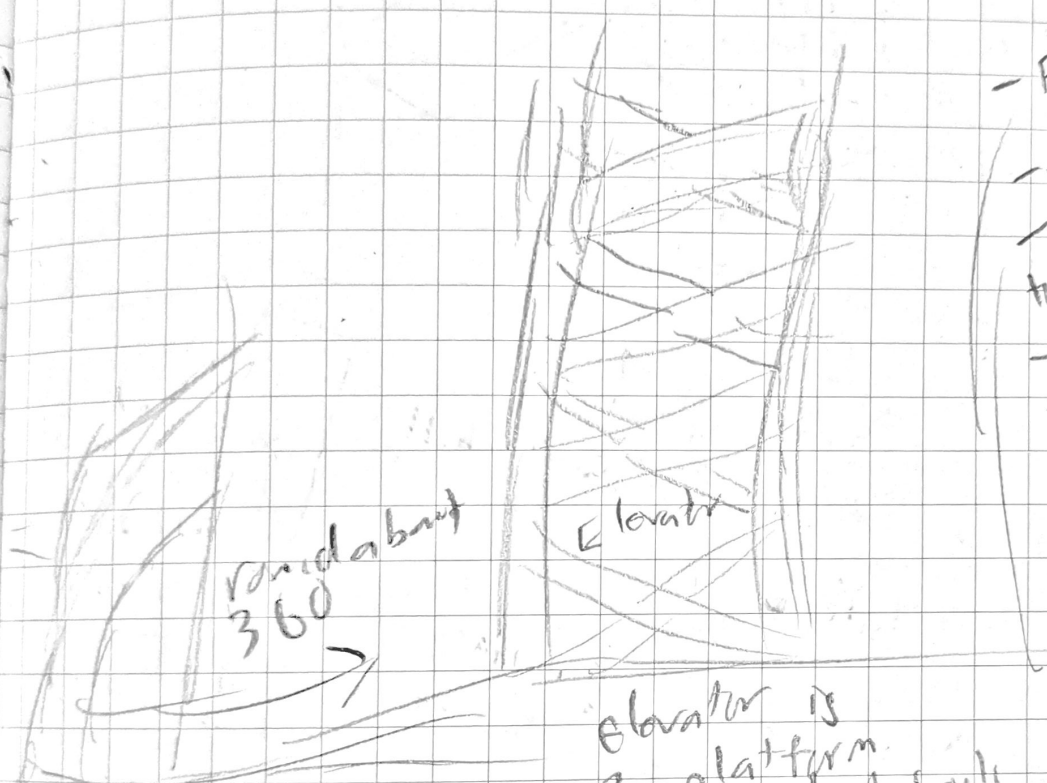


"make your peace
with this island,
there is no turning
back ahead"



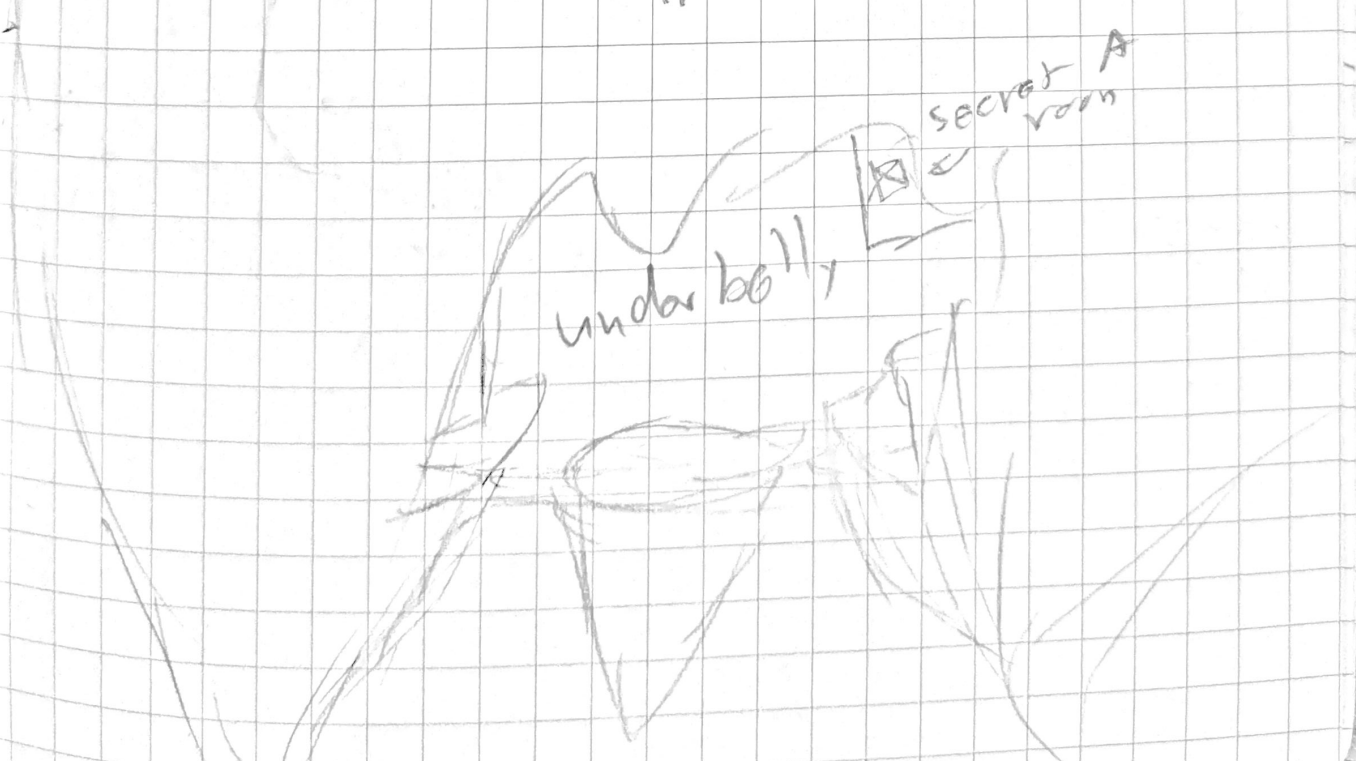
are
of
writing
d''

- Across bridge
- 360 around island to open door
- down below
- find elevator to take up
- go to side island to get key to door
- fight through interior
- visit
- ascend to roof
- final tower or (hold 2 elevators)



Elevator is
2 platform
like dark souls

2
9
F



stone gate
lock

class W

small
hill
hide enemies

upward
path

gate hill
mid way

hill

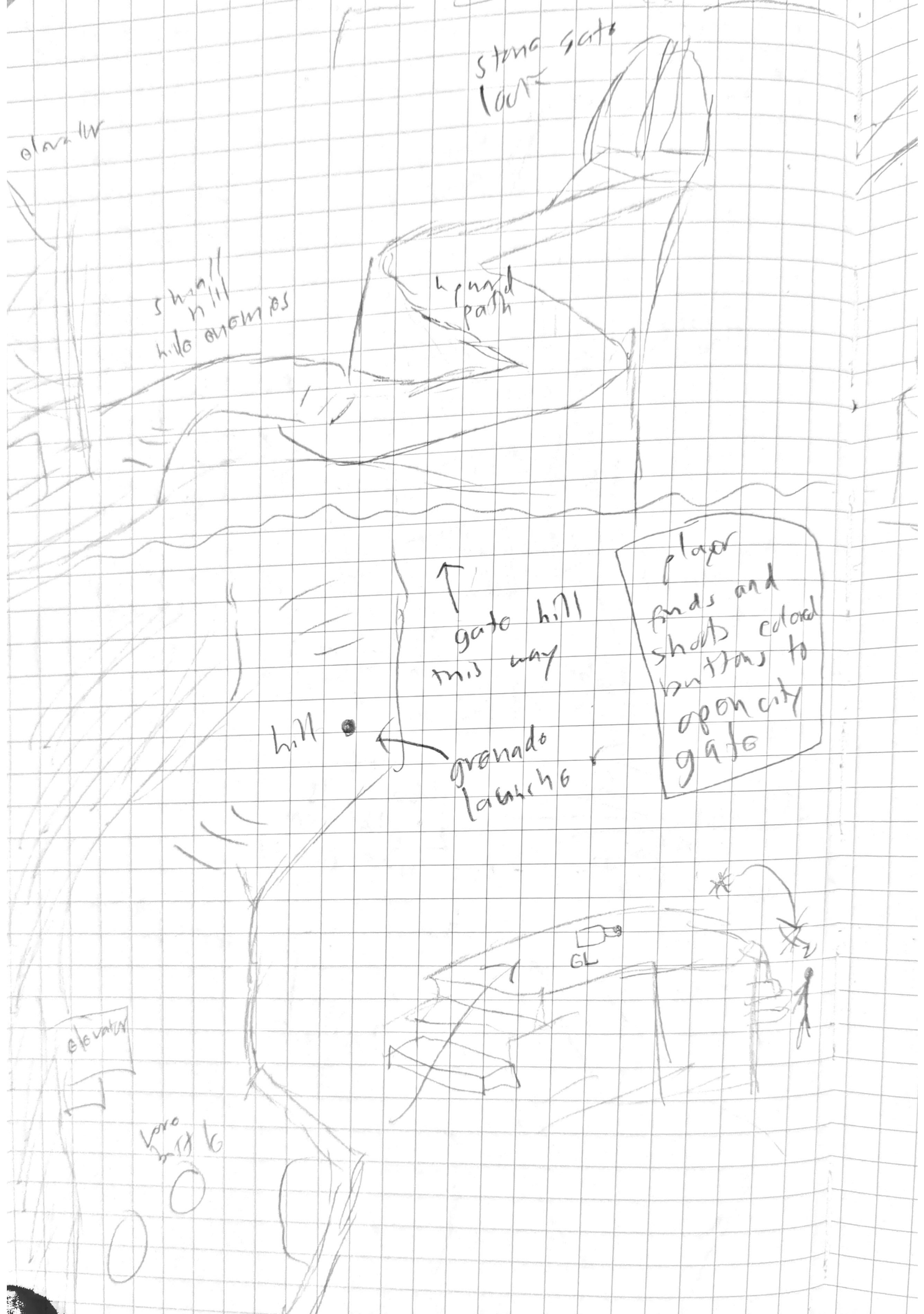
granado
launch 6

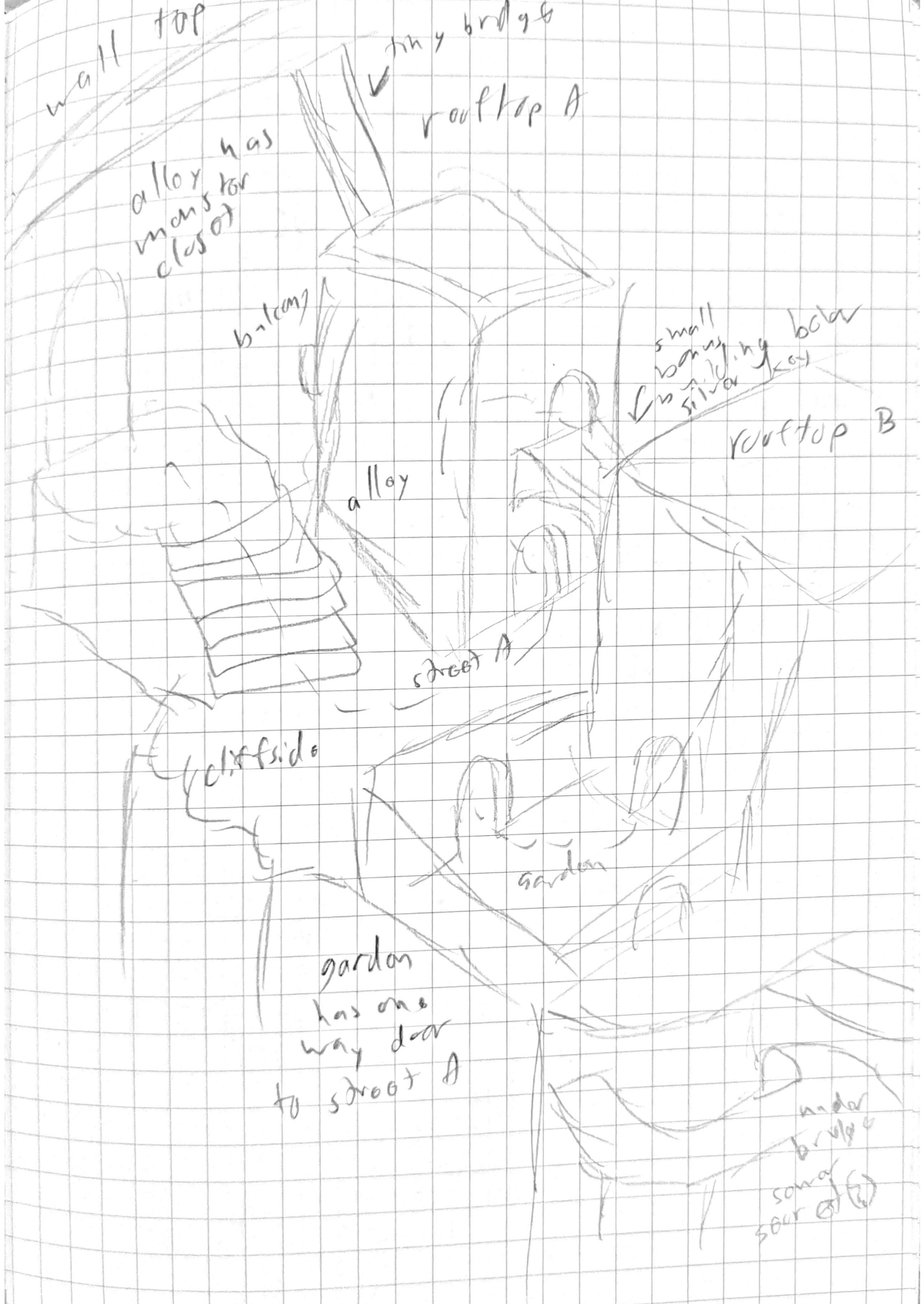
player
finds and
shoots colored
buttons to
open city
gate

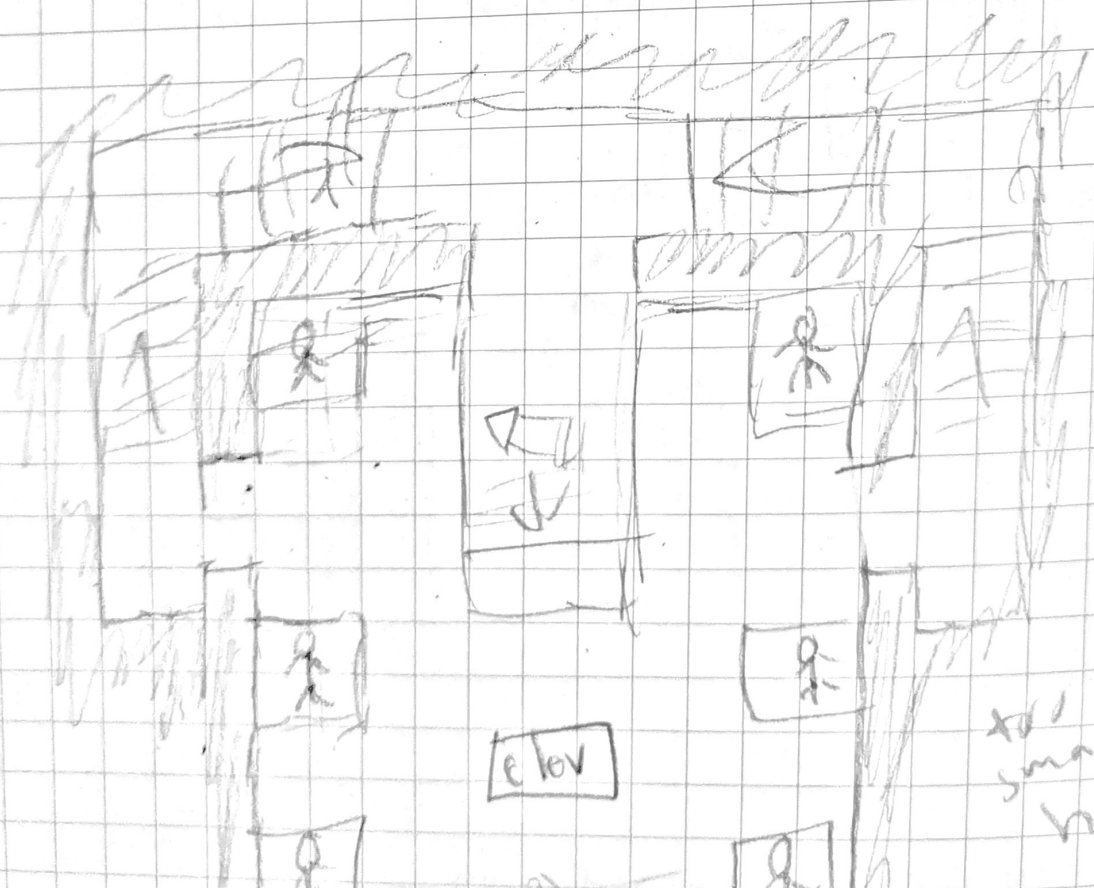
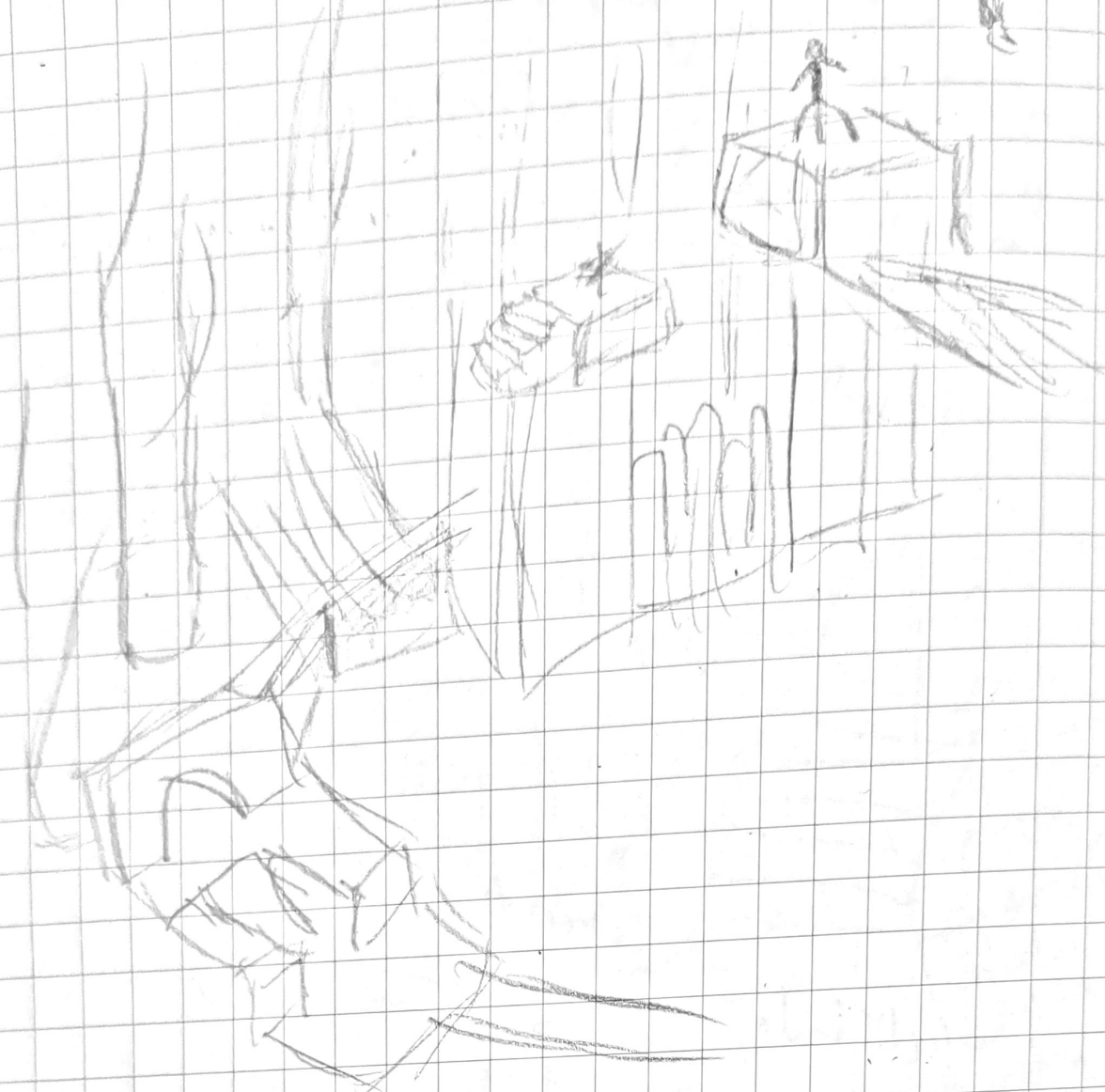
elevator

level
with 6

GL

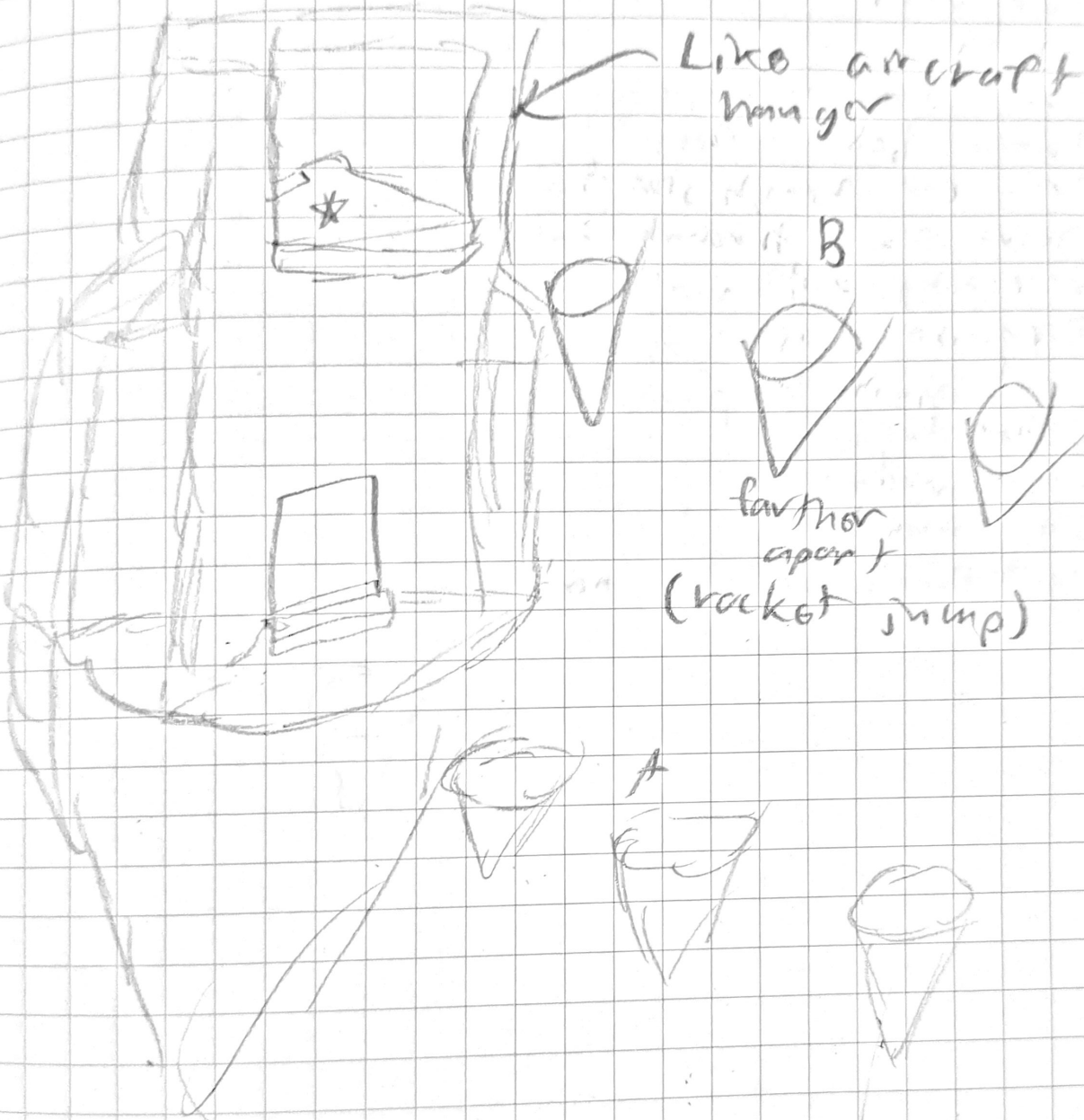






Basement:

- 2 levels
- Lower level flooded a bit
- Progressing to certain point electrifies water



- Player activates islands, A to create path to building
- First floor monster and rocket
- Player goes up and gets invincibility
- islands arrange for rocket sump path back to upper level